

# 2024 6ENSE WHITEPAPER



**DATE:**  
DECEMBER 21,  
2024



# INDEX

---

6ENSE PHILOSOPHY

---

MISSION & VISION

---

6ENSE ECOSYSTEM

---

TOKEN 6ENSE ERC-20 - INITIAL  
ENCOUNTER

---

TOKENOMICS

---

ROADMAP

---

FIRST NFT COLLECTION

---

# PHILOSOPHY



## PREMISES FOR THE AUDACS

In an era characterized by the profound integration of technology and artificial intelligence into our daily lives, society confronts a monumental challenge: how to safeguard and enrich individual identity within a framework increasingly governed by automation and mechanization. The 6ense organizational model is predicated on the notion that humans and machines, individuals and systems, can coexist in a deliberate equilibrium.

We do not engage with utopias; rather, we adopt a realizable, scalable, and adaptable approach that seeks to liberate individuals from the constraints of enforced productivity, allowing them to reclaim a space for exploration, growth, and living.

This exemplary system, designed to address human needs through an autonomous and optimized industry, seeks to provide the community with an environment where creativity and introspection can thrive in harmony with automated efficiency. Envision a society where the time and space liberated by automation are not vacant, but rather filled with opportunities: opportunities for personal growth, for self-exploration, for cultural engagement, and for genuine participation.

### **Multidisciplinarity as a Cornerstone**

To establish a robust foundation that underpins this vision, a multidisciplinary approach is essential, one that encompasses human knowledge in its entirety. 6ENSE, through the development of the ecosystem, will explore topics across fundamental disciplines to discern the mechanisms and principles that can foster a harmonious society between artificial intelligence and the complete realization of individuality. Each initiative within 6ENSE will provide an analysis of scientific discoveries, technological innovations, and ethical considerations that illuminate the path toward this new vision, acknowledging the profound interrelation of each field with well-being and development.

Physics will illuminate the principles that govern reality and our position within it, unveiling the invisible forces that shape our world and proposing harmonious frameworks for interaction between humanity and the environment. Botany will impart the language of nature, emphasizing cooperation and resilience—principles that extend beyond biological life to inform social structures. Electronics and technology will demonstrate how the relationship between humans and machines can serve as an extension of creativity rather than a threat to individuality.

### **6ENSE Pillars**

This model is founded on three essential pillars that will establish an ECOSYSTEM in which humans and machines coexist not in competition, but in a relationship characterized by mutual support and enrichment.

## 1. Values

Future society necessitates a reassessment of the values that inform its decisions. These are not merely abstract principles; rather, they are ideals that are lived and practiced, defining respect for diversity, the pursuit of truth, and the promotion of empathy as essential resources. These values will not only uphold individuality but will also serve as catalysts for constructing a more equitable reality, where technological advancement is not an end in itself but a means to enhance human potential. The value of sharing, for instance, becomes pivotal in a society where technology has dismantled material barriers and where collaboration serves as the driving force of a new economy rooted in inclusion.

## 2. Actions

To establish a society that prioritizes the SELF within the framework of automation and progress, a series of definitive actions is essential. These actions encompass the redefinition of educational models, career trajectories, and public policies to promote personal growth and authenticity. Initiatives must inspire individuals to explore and cultivate their own abilities and inclinations without necessitating the sacrifice of their identity to conform to a system that marginalizes them. From early education to employment structures, every tier of social organization will be reevaluated to reflect and support the creative and collaborative essence of humanity, within a context that acknowledges and values individual uniqueness.

## **3. Scientific Principles**

Every genuine and sustainable transformation necessitates robust foundations, and within this 6ense model, the scientific underpinnings assume a pivotal role. Physics, astronomy, biology, and the science of complexity provide essential insights that enhance our comprehension of both the external universe and the internal realm of human existence. From this vantage point, science, along with technology, transcends mere practicality and is examined as a means to broaden awareness and foster self-understanding.

## **Towards Conscious Coexistence**

Thus, it is not merely a theoretical analysis but an invitation to contemplate the potential for an alternative society, founded on the synergy between human potential and the resources of advanced technology. Each discovery and experience contribute to the establishment of a framework characterized by harmony and balance.

Let us envision a future society where the developmental trajectory of each individual is inherently connected to the advancement of the entire community. A society that fosters and nurtures self-exploration, allowing each individual to express themselves authentically and freely, unencumbered by a rigid and stifling system. As each person awakens to their essence and potential, they not only enhance their own existence but also play a vital role in cultivating a world where coexistence is not merely mandated, but genuinely desired and collectively embraced.

**The person who fully realizes his potential is not merely an “individual”; he is a force that enhances the entire social organism. Only through comprehensive and collective awareness can we create a reality where the authenticity of each person coexists with the precision of technological machinery and the diversity of others.**

6ense represents not merely an ecosystem but a redefinition of the relationship among humanity, technology, and the environment, as well as a transformation of the industry and its processes. By harnessing the capabilities of blockchain, real-time data, and artificial intelligence, it forges a path toward a future where innovation and sustainability coexist, and individuality aligns with collective advancement.

Join 6ense in shaping the forthcoming industrial and human "Big Bang."

---

ECOSISTEMA 6ENSE PLANTOGROUP SRL - Governance and Management  
WWW.6ENSE.IT MAIN WWW.6ENSE.INFO PRESALE WWW.6ENSE.NET  
LONGEVITY WWW.6ENSE.FINANCE DEX

---

---

COMPANIES:

Plantomatic® srl - Hardware and software technology  
www.plantomatic.info Plantofarm srl - Indoor pharmaceutical industrial  
cultivation www.plantofarm.com Plantolab srl - Laboratory for research  
and extraction of active pharmaceutical ingredients Re-pharma srl - EOW  
processes Network Catalyst

---

---

PATENTS UTILIZED IN 6ENSE:

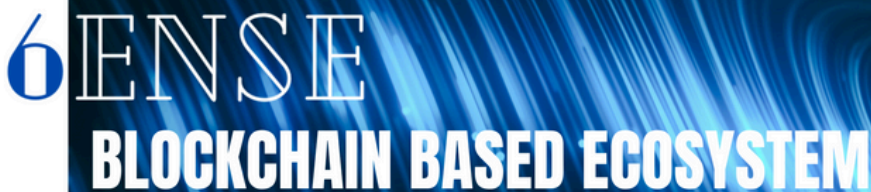
Re-pharma: patent for expired drug recycling - EOW Plantomatic: 6ense  
patent application

---

---

BRANDS IN 6ENSE:

EUIBM registered figurative trademark PLANTOMATIC®; EUIPO  
registered word trademark PLANTOMATIC®.



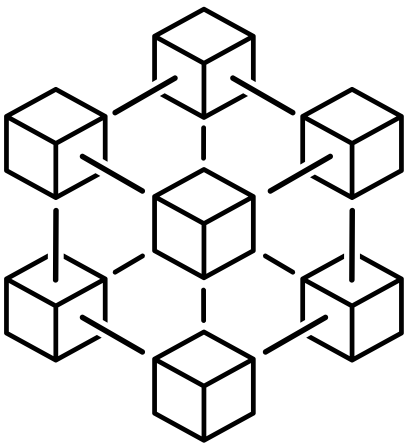
**6ENSE**  
**BLOCKCHAIN BASED ECOSYSTEM**

The logo features a stylized blue '6' followed by the word 'ENSE' in a white, serif font. Below it, the tagline 'BLOCKCHAIN BASED ECOSYSTEM' is written in a bold, white, sans-serif font. The background is a dark blue field with glowing, wavy lines and a glowing brain icon on the right side.

# ECOSYSTEM

## 6ENSE VERSE

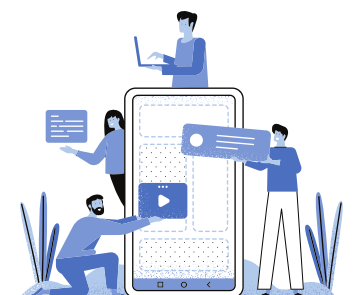
### BLOCKCHAIN 6ENSE



In 6ense, similar to any blockchain system, information is documented in blocks, each encompassing a distinct set of data from various supply chains and users. When a new set of data is introduced, it generates a new block that is "chained" to the preceding block. The complete structure of the 6ense blockchain will be revealed only at the time of launch. In anticipation of the testnet's release, the 6ense ERC-20 token has been developed.

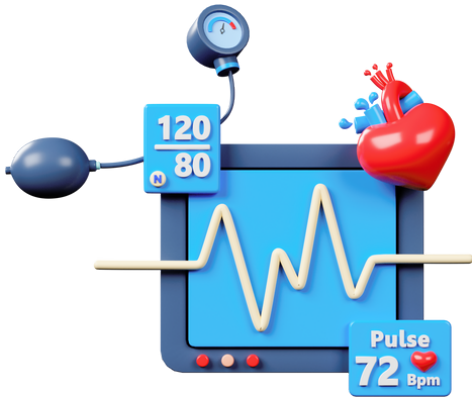
### APP 6ENSE

The 6ENSE APP was designed to function as a decentralized wallet, facilitating exchanges and various interactions within the 6ense ecosystem and other networks. Among its numerous features is the traceability of industrial production chains, providing an additional assurance of product quality for the end consumer.



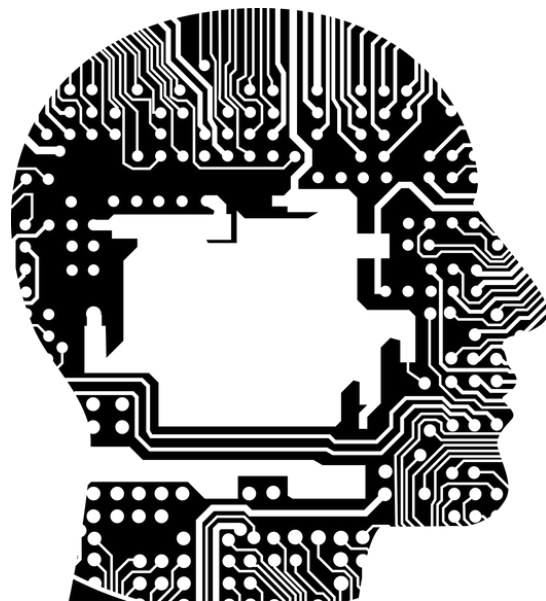


# 6ENSE DEVICES



6ense devices, produced by PLANTOMATIC®, are essential for industrial production within supply chains, serving traceability purposes. Companies within the Catalyst Network utilize these devices in their supply chains. Additional devices will be introduced over time, targeting users, consumers, and new adopters of the 6ense system.

## SAMA Artificial Intelligence



SAMA is meticulously crafted to comprehend the entire ecosystem and address every inquiry, while also encompassing all other functions inherently assigned by definition.

Holders of the 6ense/6os token will have the opportunity to utilize SAMA through their 6ense holdings. Users who do not possess 6ense/6os tokens will be able to register for a subscription or become part of the ecosystem.

# 6ENSE BLOCKCHAIN BASED ECOSYSTEM



## **Blockchain 6ENSE: Fundamental Principles**

Plantomatic devices, due to their sophisticated architecture, are designed to function as decentralized mining nodes, validating transactions and engaging in network consensus without undermining their primary functionality. The incorporation of "mining" into the everyday use of devices signifies a progressive move towards a cohesive and sustainable technological ecosystem.

The 6ENSE blockchain serves as the technological cornerstone of the entire ecosystem, engineered to guarantee transparency, security, and data immutability. Built on a distributed architecture, this blockchain facilitates the registration and verification of all transactions and interactions within the system, thereby eliminating the necessity for intermediaries and lowering operational costs.

In the 6ENSE blockchain, participating nodes are tasked with validating transactions and generating new blocks, thereby ensuring the network's continuity and reliability.

The operational logic of blockchain is founded on the following principles:



- **End-to-End Traceability:** Every product and transaction is linked to a unique identifier documented on the blockchain, facilitating comprehensive traceability across the entire production chain.
- **Data Security:** Through sophisticated encryption methods, data stored on the blockchain is safeguarded against unauthorized access, thereby ensuring the integrity and confidentiality of the information.
- **Immutability:** Once documented, information cannot be altered or removed, establishing a dependable and perpetually verifiable record.
- **Scalability:** The 6ENSE blockchain is engineered to accommodate a substantial volume of transactions, evolving in response to the expanding demands of the ecosystem.

Among the primary applications of the 6ENSE blockchain are:

- **Integration with Plantomatic Devices:** Data gathered from devices is automatically documented on the blockchain, establishing a unique and immutable connection between the physical product and its digital representation.
- **Token Management:** Blockchain facilitates the creation, exchange, and staking of tokens, offering users and businesses a secure, decentralized framework for financial transactions.
- **Quality Certification:** Each product that traverses the 6ENSE ecosystem is certified through smart contracts, guaranteeing adherence to standards and safety for consumers.

The 6ENSE blockchain transcends mere technological utility; it serves as a fundamental component in the establishment of a transparent, reliable, and innovative ecosystem. Its capacity to interconnect devices, users, and enterprises positions it as the pivotal engine driving the digital future envisioned by 6ENSE.

## **Ecosystem 6ENSE**

The 6ENSE ecosystem embodies a distinctive amalgamation of blockchain technology, artificial intelligence, and advanced industrial processes, meticulously crafted to guarantee transparency, traceability, and sustainability throughout every phase of production. Central to this "real" world ecosystem is the Catalyst network, which interlinks companies, consumers, and products in a dynamic synergy. Each component is meticulously tracked and recorded on the 6ENSE blockchain in the "digital" realm, ensuring not only product quality but also adherence to ethical and environmental standards. Participating enterprises, including Plantomatic and Plantofarm, employ sophisticated hardware devices to monitor each production stage, facilitating a continuous data flow. This system seamlessly integrates the collaboration between humans and machines, illustrating how technological innovation can act as a catalyst for collective advancement and individual well-being.

## **6ENSE Application**

The 6ENSE application is meticulously crafted to deliver an extensive array of features for both consumers and enterprises. Users can establish and manage non-custodial wallets, utilize the integrated DEX for swapping and trading, and monitor the traceability of purchased products. Among its most innovative features is access to SAMA AI, a virtual assistant adept at addressing inquiries and offering personalized support based on ecosystem data. The application also facilitates staking, token minting, and NFT purchases, rendering it a multifaceted tool for engaging with the 6ENSE ecosystem. Compatible with both iOS and Android, the app prioritizes accessibility and usability, ensuring an intuitive and secure access point.

## **Production Equipment and Traceability**

The devices engineered by Plantomatic are essential, providing precise and continuous oversight of production processes. These instruments, tailored for application within industrial supply chains, deliver comprehensive traceability that fosters enhanced consumer confidence.

Each tracked product possesses a unique digital code linked to the 6ENSE blockchain, which authenticates its origin and quality. Plantofarm, utilizing its indoor cultivation facilities, employs these devices to enhance production and uphold superior pharmaceutical standards. Furthermore, the anticipated introduction of new consumer-oriented devices, including sensors and analytical tools, is expected in the coming years, further facilitating the global adoption of the 6ENSE ecosystem.

### **SAMA AI: The Insightful Core of the Ecosystem**

SAMA AI serves as the sophisticated virtual assistant within the 6ENSE ecosystem, crafted to provide tailored and dynamic support to both individual users and organizations. Built upon a scalable artificial intelligence framework, SAMA incorporates data analysis, machine learning, and natural language processing algorithms to engage with users seamlessly and accurately.

From a technical perspective, SAMA employs a multi-layered architecture that collects, analyzes, and processes data from the blockchain, Plantomatic devices, and the 6ENSE application to generate contextualized responses and solutions. This framework guarantees that interactions are grounded in current and pertinent data, thereby providing a highly dependable user experience. For instance, a user utilizing SAMA to track the traceability of a product can access not only information regarding its origin but also recommendations for future purchases or notifications about any changes in the production chain.

Among the primary applications of SAMA within the ecosystem, the following are particularly noteworthy:

- **Decision Support for Enterprises: Enterprises can utilize SAMA to examine production data, pinpoint inefficiencies, and enhance processes.**
- **Personalized User Assistance: Users can obtain prompt support regarding 6ENSE app functionalities, including staking, wallet management, and NFT purchases.**
- **Blockchain Integration: SAMA offers a streamlined yet comprehensive perspective on blockchain data,**

rendering even the most intricate operations attainable.

**Research and Innovation: By collecting and analyzing data, SAMA enhances scientific research by identifying patterns and trends that are instrumental in improving products and services.**

SAMA's design transcends the role of a mere assistant, establishing it as a genuine digital partner and data integrator. Its capacity for continuous learning from interactions and data renders it an evolutionary tool, adept at adapting to the demands of an ever-expanding ecosystem. With SAMA, 6ENSE evolves beyond a technological system into an integrated experience that harmonizes innovation, sustainability, and human value.

### **6ENSE OS: The Operating System for Plantomatic® Enterprises and Equipment**

6ENSE OS is the operating system specifically designed to optimize Plantomatic devices and machinery for companies within the Catalyst network. This operating system embodies a state-of-the-art technological solution, adept at integrating advanced management, automation, and traceability features throughout production chains.

From a technical perspective, 6ENSE OS is founded on a modular, open-source architecture that facilitates seamless integration with existing machinery and offers comprehensive customization tailored to business requirements. Each module of the operating system is crafted to oversee specific facets of production, ranging from real-time data collection to the configuration of production processes. The direct linkage to the 6ENSE blockchain guarantees that all operations are documented and verifiable, thereby enhancing data transparency and security.

Key features of 6ENSE OS encompass:

- **Intelligent Automation:** By integrating with SAMA AI, the operating system can automate intricate processes, minimizing downtime and enhancing production efficiency.

- **Real-Time Monitoring:** Plantomatic sensors transmit continuous data to the system, facilitating ongoing observation of essential parameters such as temperature, humidity, and resource utilization.
- **Centralized Management:** An intuitive interface enables organizations to oversee all machinery and devices from a unified platform, enhancing operational management.
- **Predictive Maintenance:** Through the analysis of historical and real-time data, 6ENSE OS can forecast potential failures and recommend maintenance interventions, thereby minimizing costs and disruptions.
- **Advanced Analytics:** The system delivers comprehensive reports on supply chain performance, pinpointing areas for enhancement and facilitating strategic planning.

The implementation of 6ENSE OS provides organizations with a substantial competitive edge, revolutionizing their production processes into exceptionally efficient and sustainable operations. With the backing of the operating system, the entire 6ENSE ecosystem is progressively approaching the establishment of an innovative industrial production model grounded in transparency, traceability, and technological optimization.

# ERC20 TOKEN

## initial contact

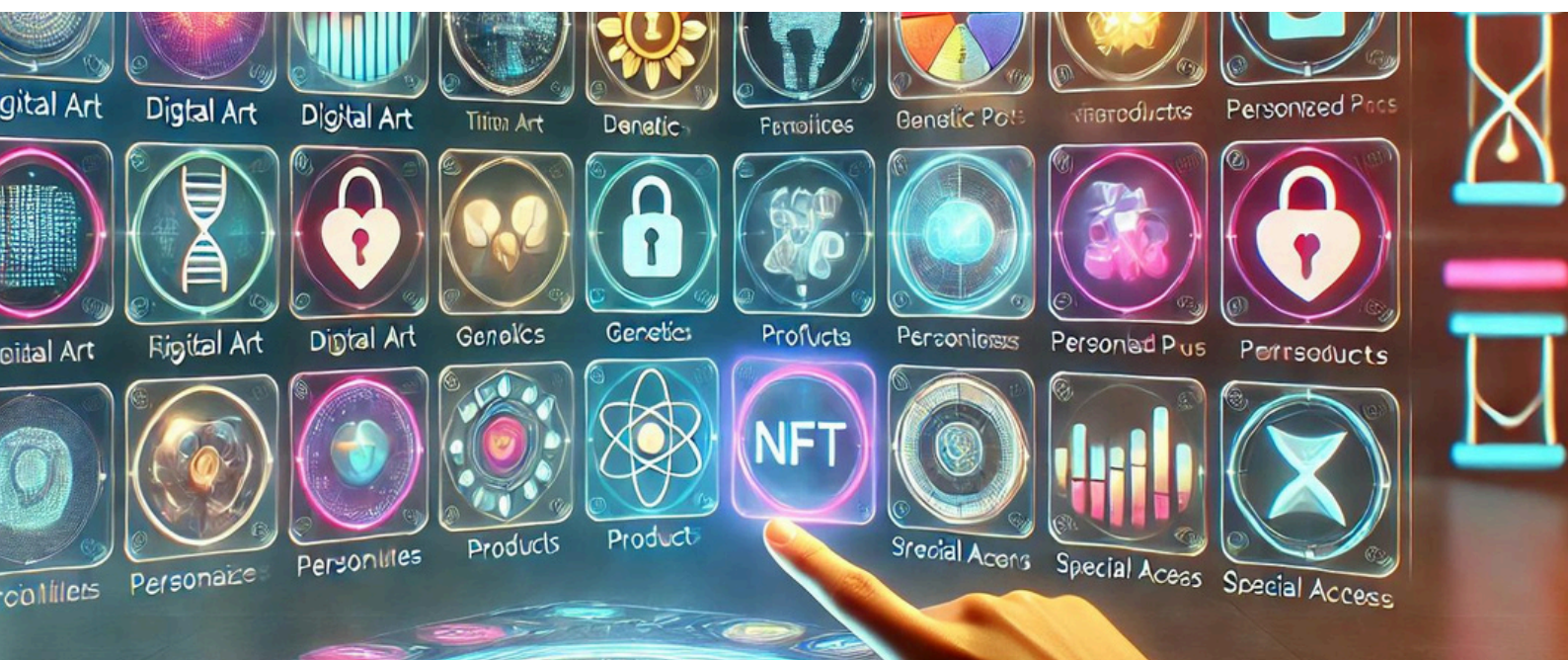
The 6ense/6os token serves as the initial point of engagement with our ecosystem. Upon the launch of the 6ENSE Blockchain, it will be tradable at a ratio of 1:1. All announcements will be disseminated through social media channels, the mailing list, and across all 6ense platforms and websites.

# Tokenomica

**PlantoGroup 10%**  
**Creator/Owner 5%**  
**Marketing 10%**  
**Catalyst Network 10%**  
**Team 10 percent**  
**CeX/DeX Liquidity 25%**  
**Future Allocation and Special Projects: 10%**  
**Rewards 20%**

## tax:

0.5% liquidity 60S/ETH  
0,5 % Plantogroup





**100% Allocation secured for 365 days: Catalyst, Future allocation.**  
**75% Allocations restricted for 365 days: Team, Plantogroup, Owner.**

**1st private forecast: shares are restricted for 365 days and cannot be exchanged for an amount exceeding the entered ETH liquidity.**

**2nd presale: 10% release with a 180-day vesting delay: 15% every 30 days. (price 0.001€/6os). GEMPAD PRESALE**

**3rd presale: (price €0.006/6os).**

1st Audit Date: September 15, 2023. GEMPAD PRESALE

**Audit Scope: Code Review and Security Analysis Report for the Gense Token Smart Contract on the Ethereum and BSC Platforms.**

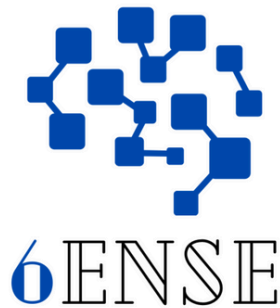
**File Gense.sol GitHub commit hash**

**be874bcd26a997db836b8002573c4436758d3931**

**Ethereum Code: 0x85018d46c4F21460490d841ef43b07bbcc99F6Dc**

**BSC Code: 0x223be542ffb661714d209e5ed7e4af18e83bc80c**

**TOKEN CHARACTERISTICS ● Total liquidity: 9,630,000,000 ● Name: Gense ● Symbol: 6OS ● Decimals: 18 ● Reward Fees: 2% in 6OS to holders ● Transaction tax: PLANTOGROUP 0.5% in ETH ● Liquidity tax: 0.5% in ETH ● Burn tax: 1% 6OS ● Maximum transaction amount: 5 million ● Number of Blocks for Blacklist: 5**



## CHECK:

The current owner is permitted to transfer ownership.

- The owner may relinquish ownership.
- Facilitate trade.
- Revise an account address on the block list.
- Revise reward fees.
- Revise the transaction.
- Revised liquidity fee percentage.
- Establish the maximum transaction limit.
- Configure the status for swap and liquidity to be enabled.

## **INITIAL UTILIZATION OF THE TOKEN WITHIN THE 6ENSE ECOSYSTEM - USER PERSPECTIVE:**

Wallet: Decentralized asset management

Dex: Decentralized trading platforms

6ense Longevity: Products, Nutraceutical Supply Chain

6ense Health: products, recipes, virtual consultations

6ense Marketplace: products and merchandise sourced from the Catalyst supply chain.

SAMA AI: Ecosystem Artificial Intelligence Assistant

6ense Plantomatic: Devices for Data Collection and Analysis

## **ECOSYSTEM - COMMERCIAL ASPECT:**

6ense plantomatic®: production devices and data collection systems

SAMA AI: Assistant and AI ecosystem

6ENSE OS: An enterprise operating system that integrates the 6ense ecosystem.

# ROADMAP

## TOKEN ERC20- 6ENSE/ 6OS

---

EVENT	No. TOKEN	DETAILS
2 PRE-SALE, P.	0.1% SUPPLY - 30 ETH 0.001€/60S	60% LIQUIDITY 40% P.GROUP
3 PRE-SALE, P.	10% SUPPLY - 301-1810 ETH 0.006€/60S - RELEASE AT THE CONCLUSION	60% LIQUIDITY 40% MARKETING
LISTING AND LAUNCH APPLICATION ETH NETWORK	0.009€/60S	
MARCH 2025		100 million market capitalization

# Financial Objectives

---

**€89.750.000**

INITIAL  
MARKET  
CAP

**€0.009**

LISTING  
PRICE  
CEX/DEX

**€0.001**

1ST PU. PRESALE



## PLANS UNDER DEVELOPMENT - FUTURE ALLOCATION

---

EVALUATION OF THE SALE OF UP TO 10% OF THE SUPPLY, DERIVED FROM THE "FUTURE PROJECTS" ALLOCATION, TO COMPANIES OR CONSORTIA INTERESTED IN INTEGRATING OR ADOPTING THE 6ENSE SYSTEM, JOINING THE CATALYST NETWORK, OR SUPPORTING THE PROJECT BY CONTRIBUTING VALUE.

1810 ETH

at present value for the future pre-sale

( 01.01.25 - 06.02.25)

# ROADMAP

## 6ENSE ECOSYSTEM

	EVENT	DETAILS
<b>2014-2016</b>	Commence extraction	sha256, ethash
<b>2017</b>	plantomatic® foundation	Automation and industrial technologies, proprietary equipment
<b>2018</b>	Plantofarm Srl Foundation	It employs plantomatic systems and machinery for its industrial production. It was the largest and most technologically advanced plant in Italy at the time. It features the first registered design draft.
<b>2021/2022</b>	Plantolab S.r.l. Foundation and Plantogroup S.r.l. Holding	Plantolab: a research laboratory and prospective pharmaceutical facility dedicated to the extraction of active pharmaceutical ingredients. Plantogroup: a management holding focused on governance within networks via the 6ense blockchain.
<b>2021/2022/2023</b>	Initiation of 6ense collaborations and solicitation of authorizations for supply chains.	Re-pharma, Herbeka, IAM Edizioni, EtherAuthority, SOC Solution LLC. Authorizations: Ministry of Health, Ministry of Defense.
<b>2023</b>	Deploy 6ense/60s and conduct testing on Uniswap.	Audit
<b>JANUARY 2025</b>	APP WALLET - DEX - MARKETING CAMPAIGN	TODAY IN TEST: Smart contracts are currently undergoing an audit review.
<b>FEBRUARY 2025</b>	6ENSE BLOCKCHAIN MARKETING CAMPAIGN AND COMPLETION FOR TESTNET	DATA FROM SUPPLY CHAINS. NOTE: CERTAIN PRODUCTION CHAINS REQUIRE MINISTERIAL AUTHORIZATION.
<b>MARCH 2025</b>	DEX	
<b>Q2-Q4 2025</b>	SYSTEM INTO MANUFACTURING ENTERPRISES AND INTRODUCTION OF THE 6ENSE COMPANY OPERATING SYSTEM WITH	INSTALLATION OF SYSTEMS, SENSORS, AND SPECIALIZED HARDWARE.
<b>Q1 2026</b>	Follow us to remain informed.	Follow us to remain informed.

# INITIAL NFT PRESALE COLLECTION



For inquiries, please reach out to us.

www.6ense.it.  
info@6ense.it  
Plantogroup@pec.it  
Plantogroup@gmail.com



PLANTOGROUP S.R.L. HOLDING